

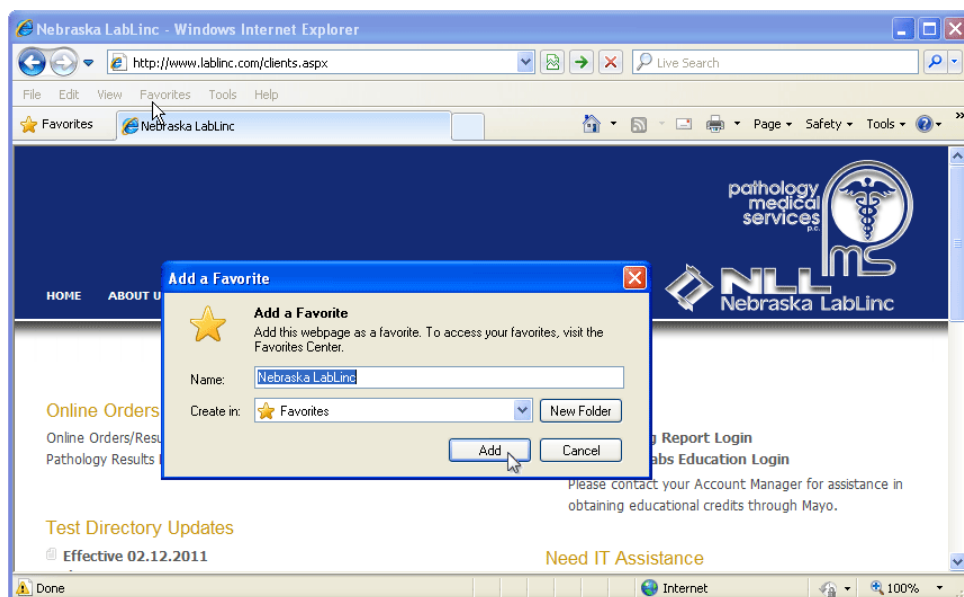
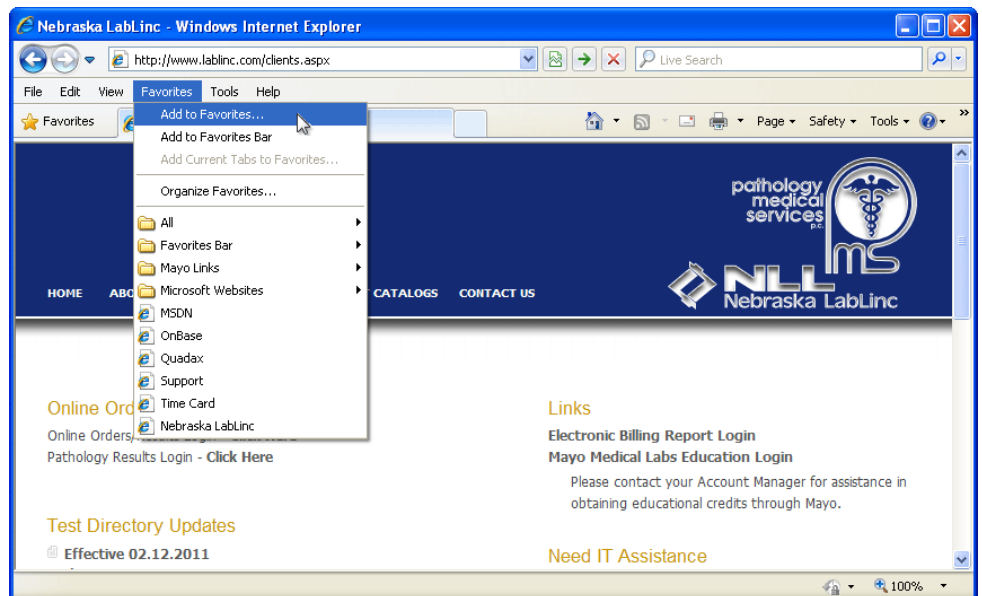
## How to update your Nebraska LabLinc Bookmark for Internet Explorer

Starting on February 1<sup>st</sup>, 2012 Nebraska LabLinc and Pathology Medical Services will begin the transition to our new combined website. Once the transition begins, you will need to update any existing Bookmarks and Shortcuts that you may have.

To help make this transition as smooth as possible, we have put together a series of flyers to assist you with step by step instructions. Should you need assistance with any of these procedures please don't hesitate to call our IT Help Line at (402) 465-1976. Our goal is to make this move as smooth as possible.

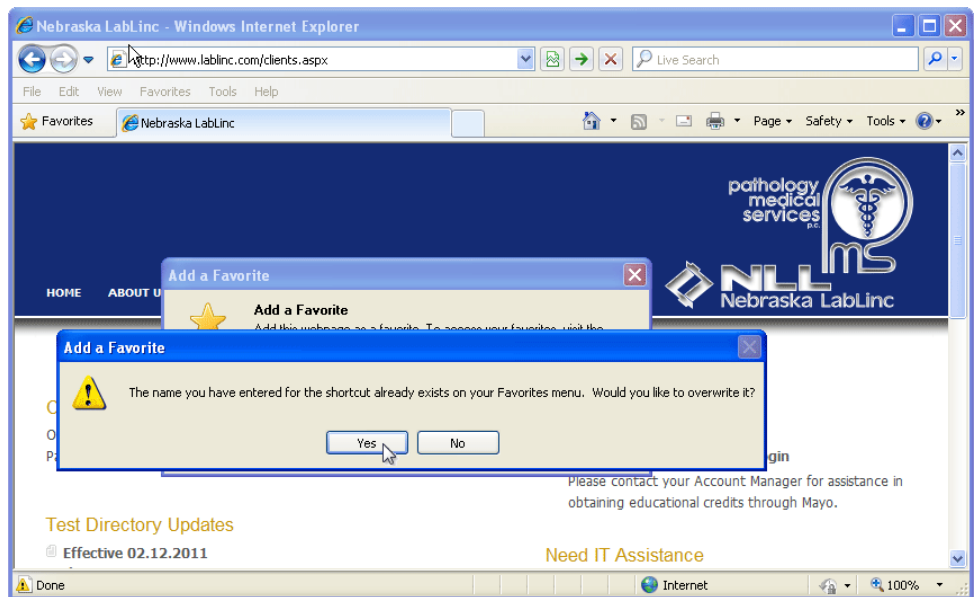
Below are the instructions for updating your Nebraska LabLinc client's page bookmark for the Internet Explorer web browser. There may be slight variations between Internet Explorer versions, but the process is the same. For all other browsers visit our client's page at <http://www.lablinc.com/clients.aspx> where you will find step by step instructions for each of the supported web browsers.

**Step 1:** Using Internet Explorer, navigate to <http://www.lablinc.com/clients.aspx> by typing that address into your address bar at the top of the Internet Explorer window. Once the site is loaded, click on the "Favorites" menu just below the address bar and navigate to "Add to Favorites" as shown on the left.

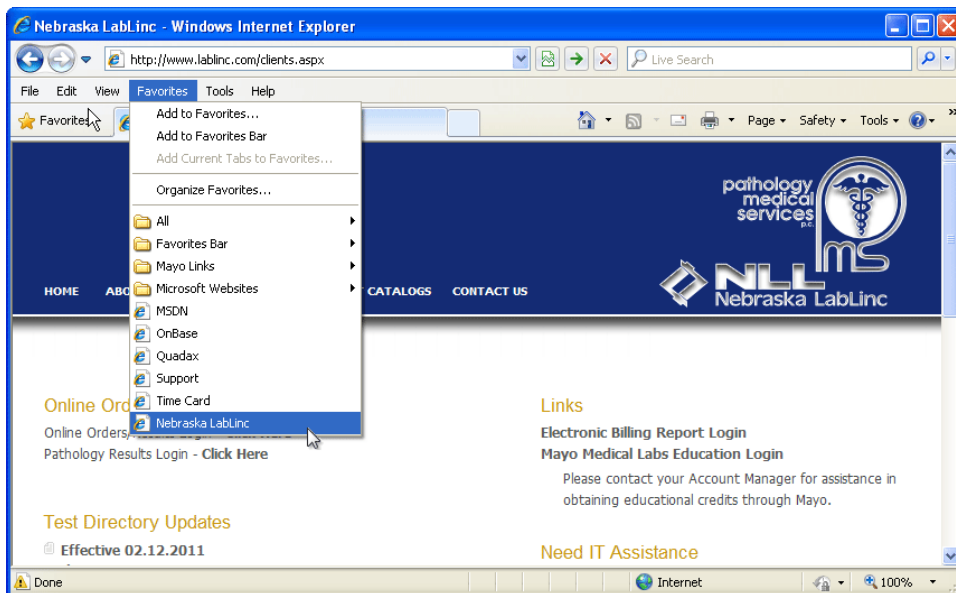


**Step 2:** You will be prompted with the dialog box as shown on the left. Fill in "Nebraska LabLinc" in the Name: text box, followed by pressing the "Add" button.

**Step 3:** If this Bookmark already existed and you are updating it, you will be prompted with the affirmation dialog box as shown in the screenshot on the right. Click the “Yes” button to go ahead and override the previous outdated Bookmark.



**Step 4:** You are done. You can find your new “Nebraska LabLinc” bookmark in the bookmarks section under the “Favorites” menu as shown in the image to the left.



For further assistance please contact our IT Help Desk at (402) 465-1976

